

Psychic Jackpot Frequently Asked Questions (FAQ)

1. What Is The Goal Of Psychic Jackpot?
2. Can You Provide A Quick Overview Of Psychic Jackpot?
3. How Do I Start Play With Psychic Jackpot?
4. What Are Some Good Ways To Have Fun With Process Of Playing Psychic Jackpot?
5. After Training With Psychic Jackpot, How Do I Use It To Play Lotto?
6. What Sort Of Wheeling Systems Are Provided?
7. How Much Money Should I Bet?
8. How Do I Upgrade My Trial Version To A Paid Version?
9. What Is The Difference Between A Full Wheel, Abbreviated Wheel And A Key Number Wheel?
10. How Does Psychic Jackpot Compare With Other Intuitive Or Psychic Training Tools?
11. How Are The Random Targets Generated?
12. What Are The Statistics Involved With Psychic Jackpot?
13. What Are Some Good References To Learn More?

What Is The Goal Of Psychic Jackpot?

The goal of Psychic Jackpot is to help you successfully win lottery drawings. Psychic Jackpot is a lottery software computer tool that combines three powerful approaches: 1) it trains your mind to become more intuitive, 2) it captures the winning numbers when you are psychically the hottest, and 3) we use lottery wheeling systems to ensure that your selected numbers are leveraged with the best lottery wheeling system and strategy. You start by developing your psychic ability to correctly predict the winning lotto numbers through training. We all have psychic ability and can improve with practice.

In short, you want to:

- Enhance your intuition skills
- Generate the best winning numbers
- Use the right wheeling system
- Then Win!

Can You Provide A Quick Overview Of Psychic Jackpot?

The first step is to train your intuition with our Psychic Jackpot program while focusing on the particular Lottery you want to win. The Psychic Jackpot software trains your brain's intuitive powers by giving you highly sensitive feedback on the accuracy of your hunches. Then review the Lotto numbers that have been generated at the time of your best precognitive/intuitive efforts.

The program evaluates when sufficient numbers have been pulled out of the random "noise" indicating when it is "reached statistically significance" to examine your best Lotto numbers. The numbers will appear in a table ranked by frequency of occurrence. Next you select the amount of money you would like to wager and the number of top numbers you want to be considered. Finally, you use one of the supplied jackpot traps and it distributes the numbers into the optimum bets. We recommend you use these bets for three to five drawings, depending on your budget, because of the psychic phenomenon known as "time shifts". You get the feedback on how accurate your bets were from the results of the lottery drawings.

Our training study¹ shows: 1) A significant majority of the trainees improved their psychic/intuition skills; 2) Trainees achieved significant overall learning; and 3) A large number of our trainees performed at a level 100 times greater than chance. The application of this technology to betting systems has been known as "associative remote viewing".

The intuitive training part of Psychic Jackpot is an electronic wheel of fortune that gives weighted, positive feedback 96% of the time. You predict which of the wheels 26 letter slots, A-Z clockwise, will be chosen by the computer as the random target, as shown by an arrow (See Figure 1). The closer you get to the target, the higher you score in money points. The Big Money is \$10,000 for a direct hit. For over 600 or more trials, the average chance score is \$1,000.

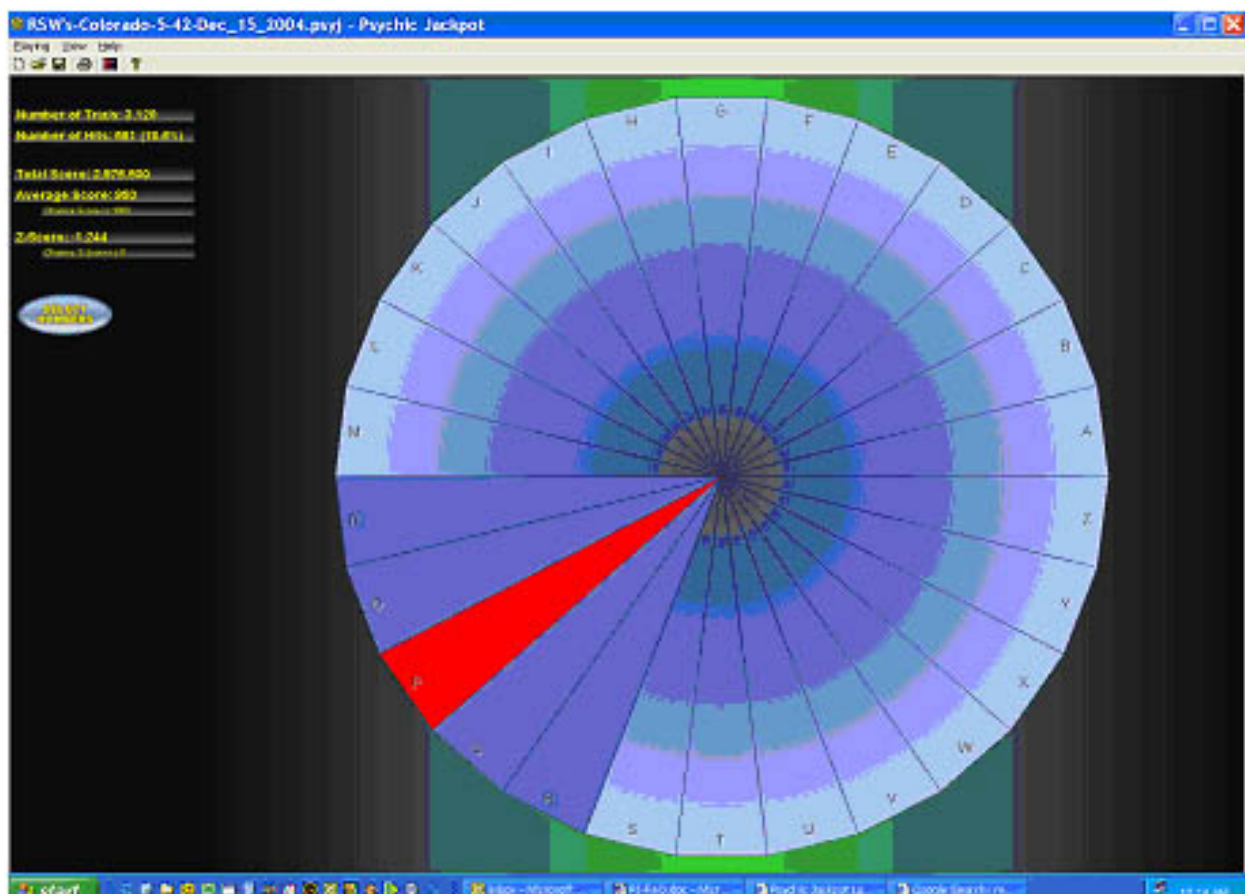


Figure 1 - The Wheel of Fortune

Direct Hit: \$10,000; 1 Off, \$4,000; 2 Off, \$2,000; 3 Off, \$750; 4 Off, \$500; 5 Off, \$200; 6 Off, \$100; 7 to 12 Off, \$75; 13 Off, \$0.

This software program design teaches you how to zero in on the target -- and develop your skill at precognition -- seeing into the future. You learn to recognize internal signals that tell you when your hunch is right and gain control of subconscious psychic processes.

Scores are automatically recorded and analyzed statistically. A graph records your progress over three series of 20 tests with 30 trials in each test for total of 1,800 trials. A statistics display gives your exact odds against chance and your scoring category. After 1,800 trials, an analysis summary gives the percentage increase and odds against chance for your increase in scoring from the first to the third series -- giving objective proof of your learning. The program lets you know if you are aiming too far to the right or left, or if you are aiming too far into the future -- 1,2,3 or 4 targets ahead. You can continue past 1,800 trials, but the graphs and summary statistics are no longer presented.

The real payoff of Psychic Jackpot is when you train your brain to use your hidden capacities to shape events in your life, and win a few lottery prizes. Once the training opens your brain's latent circuits for intuition, your brain uses intuitive powers in all situations.

Research reported in the Journal of Gambling Behavior² shows "one-third of all lottery winners reported religious or psychic experiences that led to their winning".

A medical doctor went to a casino for his "graduation test" and won \$3,000. A skeptical psychologist found he could influence random guess letters to achieve highly significant learning. "My mind was dazzled," he reports, "I was so surprised by what was happening I could hardly believe it." The highest score achieved by an individual in the training portion of Psychic Jackpot was 10,255 to 1 odds against chance. This fits the profile of successful company presidents who show outstanding intuitive ability.

By training with Psychic Jackpot, you can enhance the one key skill -- intuition -- that has been proven to be most predictive of success. And winning a few Lottery jackpots could improve your financial situation.

How Do I Start Play With Psychic Jackpot?

Psychic Jackpot is a game of chance like roulette. You cannot use your hands, or your logic to succeed. Only your intuitive powers of mind will achieve success. You have to discover your unused intuitive capabilities by trial and error. Usually that means a lot of mistakes, especially at first. The faster you get the mistakes out of the way, the faster you learn. Unlike roulette, Psychic Jackpot gives you positive feedback for getting close, and so most people's scores improve over time. With roulette, winnings do not improve over time. That is why casinos stay in business.

Most trainees have begun by scoring below chance in the first 20 tests (first series). Those who go on to show the greatest learning begin with low scores as their left-brain interacts with the feedback and they try to make logical predictions. Eventually, they learn to relax and let their right brain take over to make higher and higher scores. Scores swing from high to low, back and forth. Do not expect the progression to be steady. Below is an example of the fluctuation of your intuitive performance; you have hot streaks and cold ones, that's normal and OK. Remember the Psychic Jackpot only generates "winning" numbers when you are hot.

The first step is to go to the file menu and click on the "Play a New Game", then the following dialog box will appear:

Enter the parameters for the game ✕

Game Parameters:

State:

Number Drawn: Total:

Draw Date:

February, 2005						
Sun	Mon	Tue	Wed	Thu	Fri	Sat
30	31	1	2	3	4	5
6	7	8	9	10	11	12
13	14	15	16	17	18	19
20	21	22	23	24	25	26
27	28	1	2	3	4	5
6	7	8	9	10	11	12

Your Name:

Your Current Zip Code:

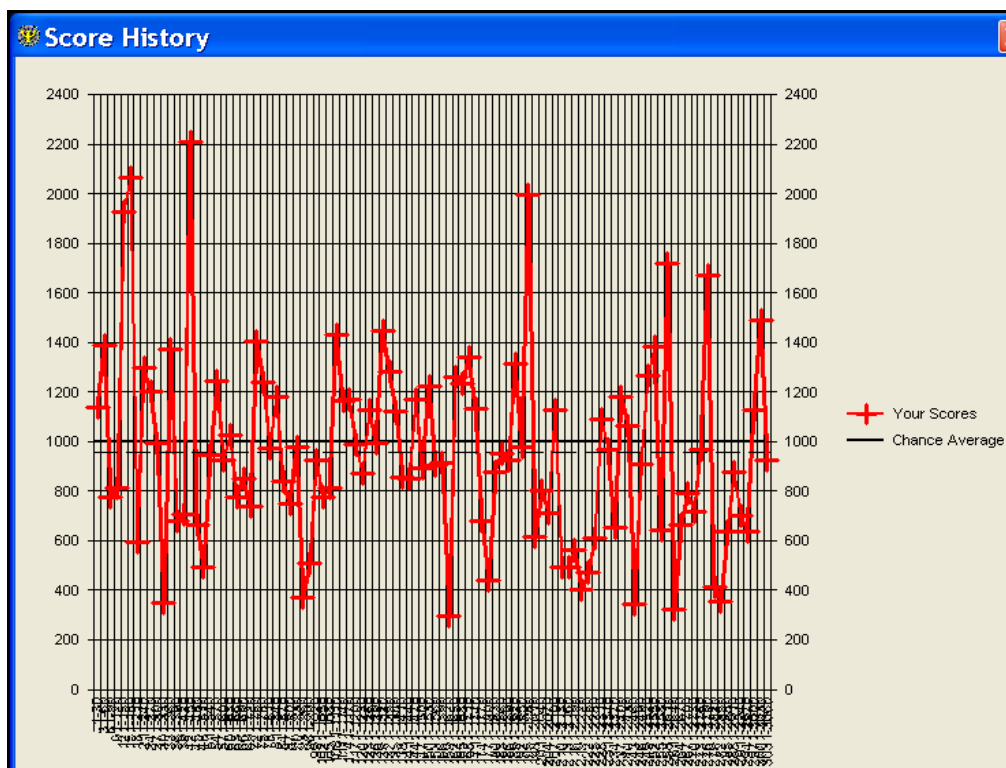
Game Parameters:

Hit Window: How far off from a direct hit will still generate a number set

To start you need to select the state lottery you want to play and what type of game it is. So in the example above it is Colorado's Pick 6 out of 42 game. Next you need to circle on the calendar the draw date that you are playing for. Generally, the next drawings will be on Wednesday or Saturday for most Pick 6 number lotteries. Then enter your name so that you can keep track of your performance over time and zip code. Finally, enter a value in the "hit window" either 0, 1 or 2. This refers to when the program generates or throws a set of winning numbers into the frequency histogram that we will see later in the program. If you choose 1, it will only generated winning numbers when

you are most psychically hot, i.e. you guess A and it comes up A, you get 10,000 points and then guess again. The downfall of this approach is that it may take longer to reach statistical significance and allow you to place your bets, use the wheels etc. Our recommendation is that you start off with a level 2 or 3 setting on the “hit window.”

When you finish all three series, the analysis summary will give the percentage increase from first to last series and the odds against chance for your ESP learning. In the meanwhile, you can get a good idea of your progress from the graph that comes on after every test, as seen below:



The power of your psychic ability is shown by significantly high single test scores (1702 or above). Theoretically one such significant score (odds of 20:1) is expected by chance for every 20 tests. The higher scores tend to come after repeating the training. Alan Vaughan's top single test score of 2800 (odds of 10,000: 1) came after a dozen training's. One trainee continually gets over 3,000.

In the upper corner of the wheel are your current performance statistics, they change and are updated with every guess. The goal is to be statistically significant, either with a

very high score or very low score, however that is secondary to focusing your mind on generating the winning lottery numbers. See picture below.



What Are Some Good Ways To Have Fun With Process Of Playing Psychic Jackpot?

Is there one strategy that stood out as giving the best results? Several people used different words to describe a similar experience:

“Being relaxed, meditative, not allowing misses to annoy me.” “Being able to completely let go--a feeling of not caring.” “Maintaining a relaxed, easy-going, playful attitude.” “The harder I concentrated, the more I got wrong--I tried to find a medium level of concentration.”

Those quotes are amazingly similar to quotes from Very Rich People on how they achieve success: maintain a relaxed, playful attitude and treat life like a game.

Try dowsing the wheel with your hand until you feel “heat” or “tingling” in your fingers.

Try inhaling through the nose, and exhaling out the mouth before each guess, or close your eyes and use the sound feedback to get higher scores. Try exercising before using Psychic Jackpot as this may help your scores.

Try typing in letters in advance of each test. Have fun with it. Treat Psychic Jackpot as an oracle. Type in a name, repeating it until you have 30 letters, and expect Psychic Jackpot will give you a high score. To enhance your positive scoring, focus gently on each letter before it comes up. Project a feeling of positive energy toward the computer and give it praise for high scores. Limit your training sessions to half an hour.

After Training With Psychic Jackpot, How Do I Use It To Play Lotto?

When you are familiar with the functions and general operation of Psychic Jackpot you are ready to begin picking winning lotto numbers.

Your conscious and subconscious mind needs to have a clear mission statement before you begin. For Example, "At the end of this Psychic Jackpot session, I want to have accurately selected the winning California 6/51 numbers for the next drawing".

You can specify any lottery game to work with (e.g., a pick 5 game like a 5/39 or a pick 6 like California's 6/51 game). You have the option to choose a psychic threshold that the computer will use to generate your lucky numbers. You can select for direct hits only, one off or two off, depending on your time available and the quality of the numbers you want to generate. When you achieve a direct hit (e.g., you pick Z, computer picks Z), then groups of five or six numbers will be generated/chosen automatically and placed into the winning number table or histogram. Plan on spending about 30 minutes to generate your numbers. It is much better to spend 30 minutes a day for a week, then 2-3 hours straight.

Here is an example of how to use the program. Select your lotto; say California's 5/39 game, and a direct hit threshold. Play for 30-45 minutes to generate the "statistical significance." If you have less time, you can use the one off and two off thresholds. This will allow you to generate lotto numbers and "complete play" faster.

Significant psychic functioning occurs in spurts/flushes or spikes of highly accurate number selection. Several of your sessions, but not all, will yield highly accurate winning numbers that should occur with the drawing you specify or within a week. You can look forward to this happening as you use the program.

With psychic functioning time does not make much sense. Your mind locks onto peak emotional events in the past, or in the future. For more information on the nature of psychic functioning consult the Conceptual Model of Paranormal Phenomenon³.

The "select numbers" option shows the user a list of collected "winning" numbers sorted according to frequency of occurrence. See Figure 2. You want all the winning numbers to bubble to the top of this presentation.



Based on a total 3,076 trials with 573 hits (1 and 2 off hit window) each hit generated six (Pick 6) numbers to be included in the frequency histogram shown below for the Colorado 6/42 game selected, your lotto number distribution chart may look as follows:

Psychic Jackpot Game Report

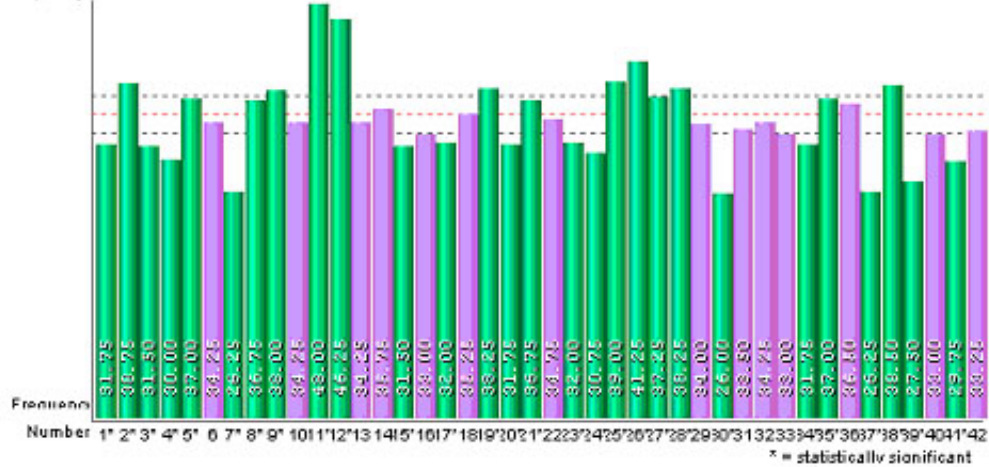
For 'Colorado 5/42' on December 15, 2004

Current Time: February 01, 2005 11:05 AM

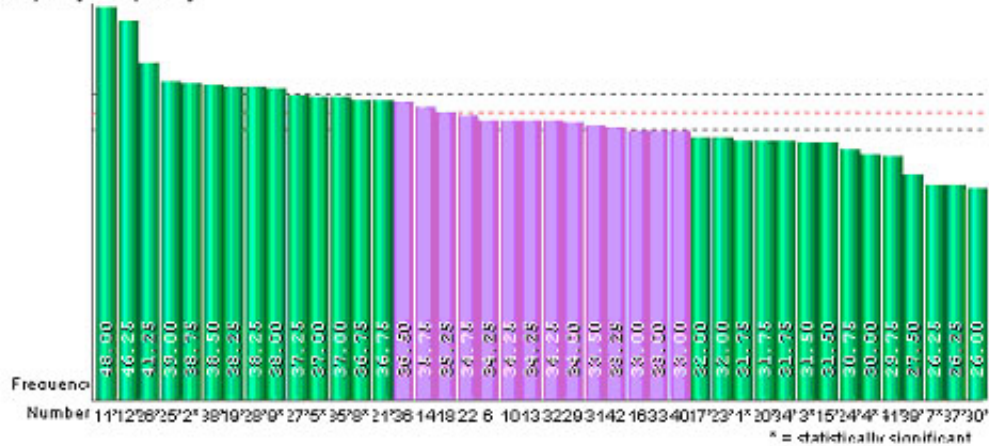
Game : Colorado 5/42
Number of Tries : 3.076
Total Score : 2935,550
Average Score : 954

Game Date : Dec 15, 2004
Number of Hits : 573 (18.6%)
Z-Score : -1.209

Graph by Number



Graph by Frequency



Psychic Jackpot Game Report

For "Colorado 5/42" on December 15, 2004

Current Time: February 01, 2005 11:26 AM

Game : Colorado 5/42
 Number of Tries : 3,076
 Total Score : 2,935,550
 Average Score : 954

Game Date : Dec 15, 2004
 Number of Hits : 573 (18.6%)
 Z-Score : -1.209

Distribution Statistics

Sorted By Number

Number	Sigmas	Number	Sigmas
1	-3.90	22	0.36
2	6.05	23	-3.54
3	-4.25	24	-5.32
4	-6.38	25	6.40
5	3.56	26	9.60
6	-0.35	27	3.91
7	-11.71	28	5.34
8	3.20	29	-0.70
9	4.98	30	-12.07
10	-0.35	31	-1.41
11	19.19	32	-0.35
12	16.70	33	-2.12
13	-0.35	34	-3.90
14	1.78	35	3.56
15	-4.25	36	2.85
16	-2.12	37	-11.71
17	-3.54	38	5.69
18	1.07	39	-9.94
19	5.34	40	-2.12
20	-3.90	41	-6.74
21	3.20	42	-1.77

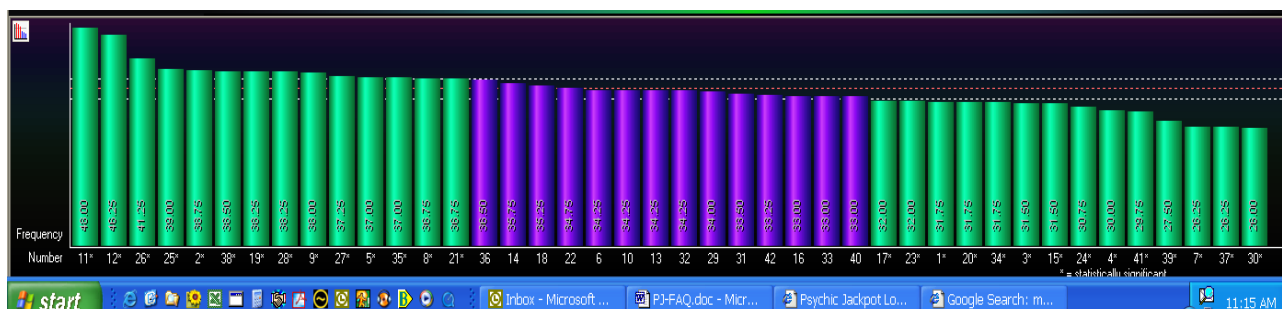
Sorted By Frequency

Number	Sigmas	Number	Sigmas
11	19.19	32	-0.35
12	16.70	29	-0.70
26	9.60	31	-1.41
25	6.40	42	-1.77
2	6.05	16	-2.12
38	5.69	33	-2.12
19	5.34	40	-2.12
28	5.34	17	-3.54
9	4.98	23	-3.54
27	3.91	1	-3.90
5	3.56	20	-3.90
35	3.56	34	-3.90
8	3.20	3	-4.25
21	3.20	15	-4.25
36	2.85	24	-5.32
14	1.78	4	-6.38
18	1.07	41	-6.74
22	0.36	39	-9.94
6	-0.35	7	-11.71
10	-0.35	37	-11.71
13	-0.35	30	-12.07

The above figures were generated by using the "Preview Game Report" button under the "Playing button" of the program.

It is important to have enough hits during the selection process to ensure a good sample of your psychic ability. The program creates a dialog box that tells you when "statistical significance" has been reached. Then you can look at the numbers by using the pull down menu.

The distribution function, another Psychic Jackpot option allows you to easily double check the quality of your work. If you have not pulled several numbers (two or more) out of the background noise of the frequency chart, then we recommend you start over. We want to ensure that the numbers you generate are statistically and psychically significant. Below is an example of a frequency histogram where several lottery numbers are pulled out of the noise and are statistically significant.



Note the three lines that go horizontally across the graph. These are the statistical significance lines, the middle one is chance and the top and bottom are plus and minus two sigma (1 chance in 333, or $p=.003$). So it would be logical to bet numbers like 11, 12, 26 on the high end and 30, 37 and 7 on the low end.

Once you feel comfortable with the quantity and quality of numbers generated, then use as many of the top numbers as your budget and goals support by using the "Wheels & Traps" option. This is the part of the program that optimally distributes your psychically selected numbers into recommended bets, using jackpot traps.

What Sort Of Wheeling Systems Are Provided?

There are a variety of wheels and wheeling systems provided, to cover the most common uses of the program. Our wheels section of the website has an even more complete and posier set of wheels or jackpot traps for your free use on the program itself. This will change as new versions are introduced.

If the intuition training part of Psychic Jackpot worked, the winning numbers will be in the top ten. The choice of a particular trap or wheel should be based on three factors: your budget, your confidence in the top numbers, and the win guarantee. The program even allows you to replace the numbers selected by any, or all, of your preferred numbers.

When you are using the Obtain Bets option of Psychic Jackpot, the program will give you the final bets or number combinations that need to be copied directly to the Lottery playslips, and then played. The program can also print out the wheels for your

convenience. Here is a sample screen shot covering 11 numbers with one 3 out of 3 win guarantee for a total cost of \$21 dollars or tickets.

Click on a bar above to select or de-select a number to trap

How Many Numbers You Have Selected 12

Min Number Correct to Guarantee a Win 3 of 3

Number of Winning Tickets You Want 1

Traps: 15 tickets

<input type="checkbox"/>	5	8	21	23	33	41	
<input type="checkbox"/>	5	6	20	21	29	33	
<input type="checkbox"/>	5	6	22	23	40	41	
<input type="checkbox"/>	8	10	22	23	29	33	
<input type="checkbox"/>	6	8	20	23	33	40	
<input type="checkbox"/>	5	6	8	10	20	21	
<input type="checkbox"/>	5	10	21	22	33	40	
<input type="checkbox"/>	5	10	20	23	29	41	
<input type="checkbox"/>	6	8	21	22	29	41	
<input type="checkbox"/>	5	8	20	22	29	40	
<input type="checkbox"/>	6	10	20	22	33	41	
<input type="checkbox"/>	6	10	21	23	29	40	
<input type="checkbox"/>	8	10	20	21	40	41	
<input type="checkbox"/>	5	6	29	33	40	41	
<input type="checkbox"/>	20	21	22	23	29	33	

There is a wide range of expense when using traps and wheels, depending on the win guarantee and the size of the wheel desired.

Both the website and Psychic Jackpot program provide wheels and wheeling systems. The website options are graphically shown below with a broad range of win-guarantees, wheel sizes and associated costs.

Pick 5 Traps	
1 Win(s), 3 out of 3, 10 Numbers (17 tickets)	1 Win(s), 3 out of 3, 11 Numbers (21 tickets)
1 Win(s), 3 out of 3, 12 Numbers (32 tickets)	1 Win(s), 3 out of 3, 13 Numbers (34 tickets)
1 Win(s), 3 out of 3, 15 Numbers (57 tickets)	1 Win(s), 3 out of 3, 17 Numbers (68 tickets)
1 Win(s), 3 out of 3, 18 Numbers (94 tickets)	1 Win(s), 3 out of 3, 7 Numbers (5 tickets)
1 Win(s), 3 out of 3, 8 Numbers (8 tickets)	1 Win(s), 3 out of 3, 9 Numbers (12 tickets)
1 Win(s), 3 out of 4, 10 Numbers (7 tickets)	1 Win(s), 3 out of 4, 11 Numbers (10 tickets)
1 Win(s), 3 out of 4, 12 Numbers (12 tickets)	1 Win(s), 3 out of 4, 13 Numbers (18 tickets)
1 Win(s), 3 out of 4, 14 Numbers (22 tickets)	1 Win(s), 3 out of 4, 14 Numbers (23 tickets)
1 Win(s), 3 out of 4, 15 Numbers (30 tickets)	1 Win(s), 3 out of 4, 16 Numbers (35 tickets)
1 Win(s), 3 out of 4, 16 Numbers (37 tickets)	1 Win(s), 3 out of 4, 17 Numbers (47 tickets)
1 Win(s), 3 out of 4, 18 Numbers (56 tickets)	1 Win(s), 3 out of 5, 14 Numbers (14 tickets)
1 Win(s), 3 out of 5, 18 Numbers (24 tickets)	1 Win(s), 3 out of 5, 22 Numbers (42 tickets)
1 Win(s), 4 out of 4, 10 Numbers (53 tickets)	1 Win(s), 4 out of 4, 7 Numbers (9 tickets)
1 Win(s), 4 out of 4, 9 Numbers (30 tickets)	1 Win(s), 4 out of 5, 11 Numbers (26 tickets)
1 Win(s), 4 out of 5, 14 Numbers (135 tickets)	1 Win(s), 4 out of 5, 8 Numbers (5 tickets)
1 Win(s), 5 out of 5, 6 Numbers (6 tickets)	1 Win(s), 5 out of 5, 7 Numbers (21 tickets)
1 Win(s), 5 out of 5, 8 Numbers (56 tickets)	1 Win(s), 5 out of 5, 9 Numbers (126 tickets)
Pick 6 Traps	
1 Win(s), 2 out of 6, 18 Numbers (6 tickets)	1 Win(s), 2 out of 6, 24 Numbers (14 tickets)
1 Win(s), 2 out of 6, 36 Numbers (54 tickets)	1 Win(s), 3 out of 3, 10 Numbers (10 tickets)
1 Win(s), 3 out of 3, 12 Numbers (15 tickets)	1 Win(s), 3 out of 3, 13 Numbers (21 tickets)
1 Win(s), 3 out of 3, 15 Numbers (33 tickets)	1 Win(s), 3 out of 3, 17 Numbers (45 tickets)
1 Win(s), 3 out of 3, 8 Numbers (4 tickets)	1 Win(s), 3 out of 3, 9 Numbers (7 tickets)
1 Win(s), 3 out of 4, 10 Numbers (4 tickets)	1 Win(s), 3 out of 4, 11 Numbers (5 tickets)
1 Win(s), 3 out of 4, 13 Numbers (9 tickets)	1 Win(s), 3 out of 4, 14 Numbers (12 tickets)
1 Win(s), 3 out of 4, 15 Numbers (15 tickets)	1 Win(s), 3 out of 4, 16 Numbers (21 tickets)
1 Win(s), 3 out of 4, 18 Numbers (27 tickets)	1 Win(s), 3 out of 4, 9 Numbers (3 tickets)
1 Win(s), 3 out of 5, 12 Numbers (3 tickets)	1 Win(s), 3 out of 5, 14 Numbers (5 tickets)
1 Win(s), 3 out of 5, 16 Numbers (9 tickets)	1 Win(s), 3 out of 5, 18 Numbers (12 tickets)
1 Win(s), 3 out of 5, 19 Numbers (16 tickets)	1 Win(s), 3 out of 5, 20 Numbers (20 tickets)

In the case to using the website to prepare your lotto bets, select the trap or wheeling system that you want and the following dialogue window will appear for your use. Then enter your Psychic Jackpot generated numbers and press “show me”

button and the resulting win guaranteed wheel is displayed below for you to simply copy directly to your state lottery play slips.

Psychic Jackpot
Enhance your innate psychic ability to pick winning lottery numbers!

[Download Software](#)
[Free Wheels & Traps](#)
[Product Description](#)
[How Does Psychic Jackpot Work?](#)
[Testimonials](#)
[Media](#)
[Support](#)

This trap covers

12	Numbers
1	Win
3	Win Guarantee
3	Amount of Numbers Correct
15	Tickets

Please note that traps with over 30 tickets may take a long time to display. Please be patient.

Please enter your numbers and press the "Show Me" button

1	2	3	4	5	6	7	8	9	10	11	12
<input type="text"/>	<input type="text"/>	<input type="text"/>	<input type="text"/>	<input type="text"/>	<input type="text"/>	<input type="text"/>	<input type="text"/>	<input type="text"/>	<input type="text"/>	<input type="text"/>	<input type="text"/>

Show Me

3 4 5 6 11 12	1 2 5 6 9 10
2 3 6 7 9 12	1 2 9 10 11 12
1 3 5 7 9 11	5 6 7 8 9 10
1 4 5 8 9 12	1 4 6 7 10 11
2 3 5 8 10 11	2 4 6 8 9 11

2 4 5 7 10 12	1 2 3 4 5 6
1 2 7 8 11 12	3 4 7 8 9 10
1 3 6 8 10 12	

What Is The Difference Between A Full Wheel, Abbreviated Wheel And A Key Number Wheel?

The lottery full wheel is a group of all ticket combinations (games) that mathematically guarantees that you will have the winning jackpot ticket, provided that all the numbers

are covered in your full wheel. These are very expensive and not useful in normal lottery play.

An abbreviated wheel the prize guarantee is selected by the player, based on the amount of money to be spent and the hopes of winning specific prizes, Jackpot, 5 number win, 4 number win and so forth.

Filtered wheels are not guaranteed, but typically start as abbreviated wheels then are reduce number of combinations (games) based on rules, such as the sum of the bet is to high or low. For example, a filter can be set to remove combinations with all odd numbers, or to include your favorite key number in every combination.

How Much Money Should I Bet?

Budgeting is a critical element in this betting program. You can gain an advantage if you pool resources, both psychically and financially, with a friend.

Psychic functioning is independent of time. Just because you tell yourself (and your subconscious) that you want the winning lottery numbers for "tonight's drawing", Psychic Jackpot will not necessarily deliver them. Your subconscious or psychic mind wants to lock on to peak emotional events in the future, which may not be tonight's drawing or next week's. However, our experience suggests that there is an excellent chance that within a few weeks your numbers will come up. Of course, if you win a large Lotto Jackpot, we expect you to have a peak emotional event.

The recommended procedure is that every set of winning numbers developed and refined with Psychic Jackpot be bet consistently on every drawing for at least four and preferable ten drawings. In the California 6/51 game (Pick 6) with two draws per week, that's two to five weeks consistently.

To further enhance your chances of success, we recommend that you repeat this betting process for every drawing for a few weeks depending on your budget. To assist the player in budgeting and managing his or her lottery investment plan, there is a chart in the PDF file presentation called introduction to lottery systems and strategies that

provides a table about: How Much Money Should I Invest? and Ticket Costs Per Drawing.

How Do I Upgrade My Trial Version To A Paid Version?

Upgrading to the full version is easy, simply go to the download software page and click on the buy now paypal button. An activation code will be mailed to you within one business day. All the activation codes are unique, if you share them with others it will not work for the second installation. Deleting and then trying to re-install the software will not work either without the correct and unique activation code.

How Does Psychic Jackpot Compare With Other Intuitive Or Psychic Training Tools?

Having tested ten thousand people over the last 20 years with many different types of ESP tests, Alan Vaughan estimates that training half an hour daily with Psychic Jackpot for two months is more effective than two years of traditional practice. Most tests use same-time ESP--such as telepathy, clairvoyance, psychometry, or remote viewing. Psychic Reward teaches people both how to predict things and make them happen.

With books or tapes for psychic development, you have to do tests to find out if the development system is working. Psychic Reward has built-in tests that give objective, scientifically valid statistics that prove your progress.

Perceptron (J S & A) is a 4-choice intuition trainer that gives significant above-chance scores or ESP learning for six percent of people. It does not record scores and cannot show learning. It gives 25 percent "false feedback" (getting hits by chance) and 75 percent of guesses are "just plain wrong." Psychic Reward works significantly better by reducing "false feedback" by a factor of six.

The process of all learning is trial and error, with feedback to guide you to better performance. Progress depends on inborn talent, motivation, and sensitivity of the feedback. Psychic Jackpot gives the most sensitive feedback of any intuition training system. You have to supply the most important ingredients: talent and motivation. If

you do well, the correct winning, Lotto numbers will be generated, which hopefully will lead to BIG BUCKS.

How Are The Random Targets Generated?

The computer's internal clock, with 8 to 50 million cycles per second in real time, freshly seeds the computer's random program for a new precognition target for each trial after a guess letter is entered. Extensive testing has demonstrated the system's randomness. There is no conceivable way to logically predict the targets, nor to manually affect their production.

What Are The Statistics Involved With Psychic Jackpot?

Odds against chance for less than 600 trials were derived from Monte-Carlo simulations, and thereafter by the Central Limit Theorem, which was confirmed by Monte-Carlo simulations.

Table 3 contains statistics, odds against chance and the single tailed p-values for various scores achieved after thirty trials or letter guesses (one test) in the intuitive training portion of Psychic Jackpot.

Table 3 Odds Against Chance For 30 Trials

Score	Odds	P (one-tailed)	
962	1:1	.5	GOOD
1229	3:1	.25	
1482	8:1	.11	
1537	10:1	.09	
1635	15:1	.062	
1702	20:1	.048	VERY GOOD
1857	40:1	.024	
1904	50:1	.02	
2001	80:1	.012	
2024	90:1	.011	
2045	100:1	.0099	EXCELLENT
2177	200:1	.005	
2250	300:1	.0033	
2339	500:1	.002	
2417	800:1	.0012	
2454	1,000:1	.001	PSYCHIC
2563	2,000:1	.00049	GENIUS
2701	5,000:1	.0002	
2727	6,000:1	.00017	
2785	9,000:1	.00011	
2800	10,000:1	.0001	TWIL-
2896	20,000:1	.00005	LIGHT
3017	50,000:1	.00002	ZONE
3104	100,000:1	.00001	
10000	10 ⁴² :1	1 x 10 ⁴²	

What Are Some Good References To Learn More?

1. Alan Vaughan and Jack Houck, "Software for Training Anomalous Cognition," Subtle Energies, Vol. 2, No. 2, 1992, pp. 31-56. Published by the International Society for the Study of Subtle Energies and Energy Medicine, 356 Goldco Circle, Golden, CO 80401.
2. H. Roy Kaplan, "Gambling Among Lottery Winners: Before and After the Big Score," Journal of Gambling Behavior Vol. 4 (Fall '88), pp. 171-182.
3. Jack Houck, The Conceptual Model of Paranormal Phenomena, ARCHAEOUS 1, 1 (Winter 1983).